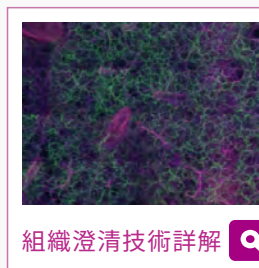


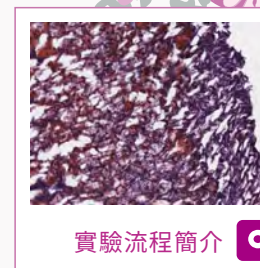
Tissue Clearing Kits

僅需簡單步驟與一般實驗設備就能輕鬆完成組織澄清透明化

- ☑ 步驟簡單高效，無須特殊儀器設備，以 8 mm 厚度小鼠全腦組織切片為例，約 48 小時即可達到澄清透明效果；1 mm 厚度切片則僅需約 4 小時。
- ☑ 可回復性，不會破壞組織構形，同一組織樣本可在三維影像拍攝後，透過回復處理繼續進行 H&E 染色、或其他化學染色。
- ☑ 相容於各式化學與螢光染劑，不會影響訊號呈現。



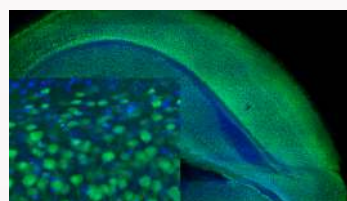
組織澄清技術詳解



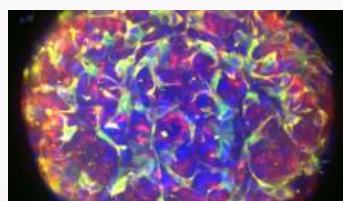
實驗流程簡介

Tissue Clearing Kits

Product Name	Cat. No.
Tissue Clearing Kit	ab243298
3D Cell Culture Clearing Kit	ab243299



NeuN antibody (ab177487) (green) and DAPI (blue) used with **Tissue Clearing Kit (ab243298)** to clear and stain a 1 mm thick coronal section of mouse brain.



Albumin antibody (ab207327) (yellow), CD68 antibody (green), Vimentin antibody (red), and DAPI (blue) used with **3D Cell Culture Clearing Kit (ab243299)** to clear and stain a 3D hepatocyte cell culture spheroid.

Brain Slicers

3D printed out of PLA, easily cleaned and just add standard razor blade

Product Name	Thickness	Cat. No.
Coronal Mouse Brain Slicer	1 mm	ab243315
	2 mm	ab243312
Sagittal Mouse Brain Slicer	1 mm	ab243314
	2 mm	ab243313

Silicon Imaging Chamber

Tissue mounting for imaging

Product Name	Thickness	Cat. No.
Silicon Imaging Chamber	1.75 mm	ab243309
	3.5 mm	ab243311
	7 mm	ab243310

Tissue Clearing Validated Antibodies

Target	Applications	Reactivity	Cat. No.
Albumin	Flow Cyt, ICC/IF, IP, WB	Hu, Ms, Rat	ab207327 R
Cytochrome P450 3A4/CYP3A4	IHC-P, IP, WB	Hu	ab124921 R
GFAP	ICC, ICC/IF, IHC-FoFr, IHC-Fr, IHC-FrFI, IHC-P, IHC - Wholemout, WB	Cat, Common marmoset, Dog, Hu, Ms, Rat	ab7260
GFAP	ELISA, Flow Cyt, ICC/IF, IHC-FoFr, IHC-Fr, IHC-P, WB	Al, Chk, Cow, Hu, Ms, Rat, Rb, RMK	ab4674
Iba1	ICC/IF, IHC-P, IP, WB	Hu, Ms, Rat	ab178847 R
NeuN	ICC/IF, Flow Cyt, IHC-FoFr, IHC-Fr, IHC-P, WB	Cat, Common marmoset, CynMk, Dog, Goat, Hu, Ms, Pig, Rat, Shp, Zfsh	ab177487 R
P Glycoprotein	IHC-FoFr, IHC-P, WB	Hu, Ms, Rat	ab170904 R KO
S100 beta	ICC/IF, IHC-P, IP, WB	Goat, Hu, Mcq, Ms, Rat, Zfsh	ab52642 R

Al: Apterionotus leptorhynchus; Chk: Chicken; CynMk: Cynomolgus Monkey; Hu: Human; Mcq: Macaque Monkey; Ms: Mouse; Rb: Rabbit; RMK: Rhesus monkey; Shp: Sheep; Zfsh: Zebrafish

R Recombinant **KO** Knockout validated

